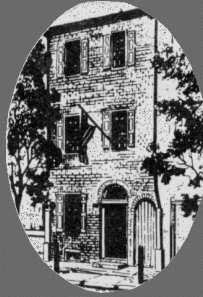


The
QUESTER



QUARTERLY

The Official Publication of The Questers

“The Whole Truth about Half Dolls”

By Irene B. Muzslay, Militia Hill #5

Dolls have been around since ancient times. “Certain countries had world-wide reputations for doll making. Japan, with two different styles of traditional dolls: France known for its fashion dolls: the Tyrol with Holland’s aid, provided inexpensive wooden playthings: England renowned for its heavy wooden and flimsy paper dolls and beautiful wax dolls; the USA with all its regional folk dolls and clever commercial inventions: and Germany world famous for porcelain and bisque, wax and wooden head dolls. These are only a few of the giants in doll making.” (Eaton, 7-8)



“Pincushion dolls or ‘half dolls’ as they are known today, probably didn’t appear until the late 18th century. It is speculated that the first pincushion doll was made with a Queen Anne doll head.” (Staff, Spinning Wheel, 189)

It was during the late 19th century that the pincushion doll was used as a teaching aid for young dressmakers. Although often called “half dolls”, these little figurines, which were terminated at the waistline, were not dolls for children to play with, but were meant to be fastened to useful household objects. In this country they have been labeled ‘pincushion dolls’, although in Europe they were first used to top tea cozies.

“The more ordinary pincushion doll is, strictly speaking, half doll, half pincushion, as the legs were either removed, the pincushion hiding the deficiency, or they were buried in the sawdust stuffing when the pincushion was being made.” The bulk of half figures were made of china, a general term covering the potters’ wares, and some high quality pieces were produced in fine porcelain. However, almost any kind of material, such as wood, celluloid, bisque, Bakelite or plastic was used for the later types of pincushion dolls which continued to be manufactured throughout the first half of the 20th century. But by then the doll-part was a true half doll, with a hollow head and torso, made with holes along a low waist-line so that it could be sewn more easily on to a pincushion skirt.” (Eaton, 160)

“These half dolls illustrated the varied fashions from the time of Egyptian rule to the beginning of the 1940s and World War II. This period covers the fashions of the medieval ages, colonial years, French Revolution, the Biedermeier styles of lace, satins and floral patterns, and the angular art deco period with the independence of the flapper era. Porcelain manufacturers designed a few half dolls that represented the headdress of early rulers, such as Caesar and Cleopatra. Earlier research in the field of half dolls also revealed that some of them represented famous portraits and historical persons, notably Marie Antoinette. In addition to representing the folk costumes of many lands. ‘Each half doll was molded so that the hairstyle was designed to match the appropriate style of the bodice. The pincushion, tea cozy, lamp or other type ‘skirt’ covering would be designed to complete the fashion statement represented by the model.’” (Van Luven, 6)



“With the onset of World War II, the production of the half doll ceased. The workers were needed in the war effort and half dolls were considered trivial. The factories were vacated or were made to produce war articles. The fragile half dolls were easily broken, viewed as ‘clutter’ and tossed away. Because so many were made in Germany, American households eliminated a number of items associated with that country. So even though thousands of these half dolls were produced, some of the figurines are very rare. These “mippes”, as half dolls are often called, are gaining popularity. The interest is international and contagious.” (Van Luven, 7) CONTINUED ON PAGE 6.

THE QUESTER QUARTERLY

is published four times a year by The Questers, 210 South Quince Street, Philadelphia, PA 19107, (215-923-5183). Receipt of the magazine is a privilege of membership in The Questers, a private, non-profit, international organization incorporated in the state of Pennsylvania. The purposes of The Questers are to educate by research and study of antiques and to donate funds to the preservation and restoration of existing memorials, historical buildings, landmarks and educational purposes. Publication of *The Quester Quarterly* is made possible by a portion of membership dues under the direction of the International Executive Board. The printing house is Eagle Press, Inc., P. O. Box 1278, Browns Mills, NJ 08015. Design and layout is by Robbie Miller, Printing & Design Services, 1221 Hunter Street, Conway, AR 72032. Third class postage is paid at the Philadelphia Post Office. Send all address changes to *The Quester Quarterly*, 210 South Quince Street, Philadelphia, PA 19107.



email: questers210@questers1944.org

The Editor reserves the right to edit all copy. Due to limited space, we regret that occasionally submissions must be shortened. Please send all copy via email or typewritten to:

Editor: **JANET HOLLAND**
5847 E. 62nd St.
Tulsa, OK 74136
 jholland0412@sbcglobal.net
 Tel 918-494-9753

Include your chapter's name, number, city and state/province, your address, and telephone number or e-mail address so that you can be contacted if there are questions. Print your name clearly. Photos can either be color or black and white. If emailed, send as a 300 dpi attachment.

COPY DEADLINES

Summer	June 1, 2015
Fall	August 1, 2015
Winter	October 1, 2015
Spring	February 1, 2016

QUESTERLOGUE
Future International Conventions

May 1-3, 2015	Hyatt Regency
	Princeton, New Jersey
May 20-22, 2016	Marriott
	Des Moines, Iowa
May 5-7, 2017	St Petersburg Bayfront
	St Petersburg, Florida

THE QUESTERS WEBSITE:
<http://www.questers1944.org>

PRESIDENT'S MESSAGE

“SPRING is a Time of PLANS and PROJECTS” - Leo Tolstoy



Today, as I sat by the fire holding a hot cup of tea in honor of Bess and making plans for **Spring**, I began wondering what would happen if every Quester started NOW making **plans** and defining **projects** for the next Quester year? Maybe you could take a few ideas from my list to:

SPRING..... into your walking shoes and find the perfect P&R **project**. The 2016 Grant Guidelines and Application are now posted on The Quester Website. Submit your applications before November 15th to Robin Gildersleeve, P&R Chair.

PLAN..... to attend the 2015 Convention in Princeton, NJ. New Jersey Questers have worked very hard to make every event, tour, and program the very best. It's not too late.

SPRING.... into your neighborhood library or use your internet to begin writing a Study Paper **project** on your favorite historical person, site, event or your newest collection. All Questers could benefit from your research.

PLAN.... to support The Quester Funds (Scholarship/Fellowship/210 Maintenance/Education/P&R/Grant) in your yearly State/Provincial/Chapter budgets. If your chapter has benefited from an International Grant Award, consider having a fundraiser to give back to the Grant Fund for other chapters to enjoy.

SPRING.... into planning a “Questers’ Party” to invite new members and start a new chapter. To support our current budget, Questers must maintain a membership of at least 11,000 or dues must be raised. Please let this be a **Springtime project** of Quester growth for your State/Province and Chapter.

PLAN.... to use The Questers’ logo in your publicity articles, brochures, correspondence and **projects**. The Questers has renewed our expensive license for our Trademark (logo), which identifies all States/Provinces/Chapters as a part of our internationally recognized The Questers organization. Trademark laws, as well as The Quester Bylaws, prohibit embellishing The Quester “Q” (logo) in any manner.

SPRING.... is the time to install new officers. **Plan** to say “yes” when asked to serve, thank your outgoing officers for a job well done, and prepare revised notebooks for your officers by eliminating outdated materials and replacing with current material you receive from the **2015 WORKSHOPS** during Convention. These Workshops are designed to inform, prepare, and energize everyone who attends....even if you are not currently serving as an officer.

PLAN.... and make it a **project** to submit an article for the Summer *Quester Quarterly*. Chapters are encouraged to submit one article a year. The Quester QQ year begins with the Summer issue. Articles will be printed in order received and upon space available.

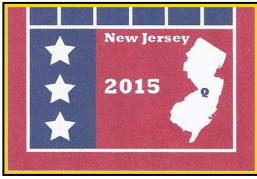
SPRING.... into participating in every Quester event your Chapter/State/Province offers. Be a PROactive Quester member and make it a **project** to bring a friend with you.

PLAN.... interesting programs and **projects** for the coming year. You will receive many fantastic ideas by attending the Program/Yearbook/Facebook WORKSHOP during Convention.

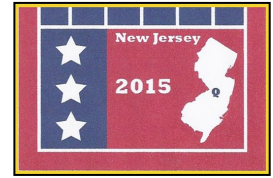
May the freshness of **Springtime** renew you with inspired programs, projects and a commitment to finding new Quester members for the coming year! It's Fun to Search and a Joy to Find --- whether it is knowledge, collectibles or friendships!

Happy “Questering”

Ginger



65th Annual International Convention
May 1–3, 2015
The Hyatt Regency
Princeton, New Jersey



New Jersey Questers have completed our work and are ready to show off our state to special Quester friends and guests from across the United States and Canada.

We wish you safe travels and good health as you journey to
“New Jersey – It’s Revolutionary”

DRIVING DIRECTIONS
TO THE HYATT REGENCY HOTEL
 102 Carnegie Center

HAMPTON INN
 4385 US ROUTE 1, 1-609-951-0066 Complimentary breakfast, area shuttle is an 8 -10 minute drive to Hyatt Regency. **Ask for Quester rate.**

From North:

Take NJ Turnpike SOUTH to exit 9 (New Brunswick), after the toll stay RIGHT and take Rt.18 NORTH, proceed ½ mile and take Rt.1 SOUTH for 18 miles to exit for ALEXANDER ROAD EAST, Proceed 2 traffic lights and turn RIGHT into Carnegie Center. Take first RIGHT into Hyatt Regency entrance.

From South:

Take I-295 NORTH to Exit 67A, (Rt. 1 North / New Brunswick), proceed on Rt. 1 NORTH 3 ½ miles towards Princeton area. Exit RIGHT onto ALEXANDER ROAD EAST. Proceed to next traffic light and make RIGHT, the entrance to Hyatt Regency is on the RIGHT.

From East:

Take I-195 West to I-295 NORTH to Rt. 1 NORTH, Exit RIGHT onto ALEXANDER ROAD EAST, proceed to next traffic light and make RIGHT, The entrance to Hyatt Regency is on the RIGHT.

FREE PARKING AT ALL HOTELS LISTED

Still need a room? Please go to www.njquester.org for a list of Princeton hotels that have shuttle service.

DRIVING DIRECTIONS



Anyone who has to cancel a reservation is asked to do so ASAP so that other Questers can take advantage of the Quester room rate. The deadline is March 27th. To make or change reservations, please call the Hyatt Regency directly at 1-609-987-1234.

DUE TO THE WONDERFUL RESPONSE OF ATTENDANCE, HOTELS CONVENIENT TO THE HYATT REGENCY HAVE BEEN ADDED.

HYATT PLACE PRINCETON

3565 US ROUTE 1, 1-609-720-0200. King & double suite rooms, breakfast is included. Shuttle is a 4 min. ride to Hyatt Regency.

RESIDENCE INN PRINCETON CARNEGIE CENTER

3563 US ROUTE 1 SOUTH, 1-609-799-0550, right next to Hyatt Place, also suites, free breakfast and shuttle to Hyatt Regency. **Ask for Quester rate.**

From **Hyatt Regency (1): Residence Inn (2) and Hyatt Place (3)**. Leave back of Regency parking lot LEFT onto Carnegie Dr. LEFT to Alexander Rd. Continue on this road until the Canal Pointe Blvd. jug handle on RIGHT, go around and stay on Canal Pt. Blvd. to Market Fair entrance on LEFT. Hotels are straight ahead. (SEE MAP)

For Hampton Inn (4). Leave the back of parking lot, LEFT onto Carnegie Dr., LEFT onto Alexander Rd. and quick RIGHT on ramp to Route 1 NORTH. Continue approximately 2.5 miles to Ridge Rd. ramp to Route 1 SOUTH, Hampton Inn is on RIGHT.



65th Annual International Convention
May 1–3, 2015
The Hyatt Regency
Princeton, New Jersey



CONVENTION TRAVEL INFORMATION

To/From Newark Airport: (Best Choice) **State Shuttle** is offering special rates to the Questers International travelers. The following rates are available between Newark Airport and the Hyatt Regency: **Shuttle Van: \$36** (plus gratuity) per person one way. **Private sedan: \$137** all-inclusive one way (seats 1-3 passengers). **Private Van: \$195** all-inclusive one way (seats 1-10 passengers). To book these special rates please call State Shuttle at 800-427-3207 and use the profile number 92645 or the group name "Questers". You may also book online using this special web address: http://stateshuttle.hudsonltd.net/res.? USER_IDENTITY = QUESTERS - LOGON=GO

New Jersey Transit Train goes to Princeton Junction. The hotel will pick up there but you must call ahead. **Frontier Airlines flies to Princeton/Trenton Airport** From there it is a 20 minute ride to hotel. Taxi available at the airport.

To/From Philadelphia Airport: Princeton Car Service Phone 609-731-9929, email: princetoncarservice@msn.com. Best rates, hotel recommended. Reserve ahead. It is best to make above reservation before leaving home. It cannot be made when you arrive at the airports.

NEW JERSEY WEATHER FOR EARLY MAY:

Average high temperature is 71° F
Average low temperature is 49° F
Rain fall average for early May is 3.50 inches

Remember, New Jersey is the Garden State and April showers really do bring May flowers. We suggest that you dress in layers wear comfortable shoes and don't forget your umbrella.

Special Events...Why Not Dress Up

If you enjoy dressing up for the themes of events and adding to the fun...

- President's Reception** ~ The American Revolution
- Annual Banquet** ~ Evening Wear
- Annual Luncheon** ~ heading for the beach or perhapsVictorian casual
- Farewell Dinner** ~ 50's and 60's going to a diner.

AHEAD OF THE CURVE

The January/February 2015 issue of the magazine *ANTIQUES* has an 18 page article written by Ulysses Grant Dietz. (Yes, he is a descendant of President Grant.) Chief Curator and Curator of Decorative Arts at the Newark Museum. The magazine editors state how fortunate we in New Jersey are to have this museum and a curator like Dietz. This museum is ahead of the curve with its collections. New Jersey Questers are also ahead of the curve because we have Ulysses Dietz booked to give an Armchair lecture on the New Jersey Jewelry Industry. Come join us on May 1st at the Hyatt Regency to hear this great speaker.

IMPORTANT TOUR INFORMATION

1. Please arrive at the designated bus loading location at least 15 minutes before departure time. To keep to our schedule, buses **must** depart on time.
2. The NJ Convention Committee will provide you with a refillable water bottle when you register. Please bring your bottle with you on your tours. Water will not be supplied on the bus.
3. No need to tip the bus driver, it's included in the cost.
4. **Photo identification (airport type security) is mandatory for Ellis Island /Statute of Liberty, Tour # 22.
5. **Photo identification is necessary for admission to the NJ State Capital Building, Tours #10 & #25.
6. Tours #1 & #19, Grounds for Sculpture, the Retrospective has been extended so you will see the 26 ft. tall Marilyn Monroe as well as other sculptures that have been brought back to New Jersey for this limited exhibition.

Please be advised buses are not handicapped accessible.

MORE INFORMATION

Please check the *Quester Quarterly- Winter 2014*, edition and NJ web site (www.njquester.org) for full Convention information and forms.



P & R GRANTS

It's that time again! If your chapter is working on a preservation or restoration project, this is the year you can apply for an International P & R Grant. Just follow these simple guidelines:

Print the Application and Guidelines from the Quester Web Site: www.questers1944.org. Click on grants.

Remember:

1. Applications must be postmarked by the November 15, 2015, deadline and mailed to the International P & R Chairman (information below).

2. Grant awards range from \$500 to \$5,000.

3. Grants are awarded to Quester Chapters for local projects that are NOT privately owned. For example, a historical home owned by the city, county, or state would qualify for a grant. Local chapters cannot, however, apply for a grant to be given to a state/provincial P & R project.

4. Approval letters must accompany applications (either one or all may be needed)

A. A state approval letter

B. A state approval letter for a fund raiser if raising funds outside the chapter

C. If in an unchartered state/province, a letter of approval is needed from the International Executive Board.

5. Applications must be signed by hand by both the project chairman and the chapter president.

6. All projects must be completed in ONE YEAR. A 6 month progress report and a final report must be mailed to the International P & R Chairman.

7. Any unused grant monies must be returned to the International Treasurer.

8. If you have questions or need help, contact the International P & R Chairman: Robin Gildersleeve, 6 Arrowwood Ct., Durham, NC 27712, 919-475-6699, robin@informintl.com

Publicity Materials Being Updated

An updated Questers brochure and publicity booklet packed with ideas and ways to grow Questers will soon be available. The current brochure and booklet are still available on The Questers website: (www.questers1944.org).

A Spring Idea: Display Questers P&R projects at local farmers' markets publicizing Questers involvement in the community. Have Invitation to Questers cards with contact information available.

ALERT

NEW MEMBERSHIP DUES FORM

Chapter treasurers will be receiving a newly formatted **Membership Dues Form** for chapter membership. The new form will have instructions at the bottom of the page making it easier to complete. Look for it to come to your Chapter treasurer.

"The Whole Truth about Half Dolls"

Continued from the Front Cover

Most of the pincushion dolls found today were made in Germany between 1920-1930 by such manufacturers as Dressel & Kister. Japan is also known for manufacturing



half dolls, but they are of a lesser quality than the ones produced in Germany.

Today's collector will have to consider "many variables that would influence the price such as: condition, quality, markings, size, originality, uniqueness and detail. The condition of the doll is of utmost importance. If the half doll is marked, it will have a 4 or 5 digit mold number. A doll that is marked would be worth

slightly more over a doll not marked". (Endo, III-V). When considering the purchase of a half doll, check for an identification mark; such as symbols, trademarks or production numbers. These will help name the manufacturer, country of origin and indicate period when they were produced.

"Sizes range from 1-inch to 10 inches and usually the largest size commands the highest price. Consider originality since most pincushion dolls were made to serve some kind of useful purpose or be an adornment of some kind. Detail is a prime consideration when judging the value of a pincushion doll. It basically is the amount of adornment a doll has and the position of the arms. Objects held in the hands, fancy head adornments and unusual molded clothing are the epitome of the desired detail. The more ornate and detailed the doll is, the higher the value." (Endo, V)

It is interesting to note that the average pincushion doll originally sold for less than \$1.00. (Endo, IV)

LIST OF SOURCES

1. Eaton, Faith, Dolls in Color, New York: MacMillan Publishing Co., Inc., 1975
2. Endo, Susan, 2nd Price Guide to Pincushion Dolls, Covina, CA: Graphics United, 1990
3. Marion, Frieda, Complete Book of Dolls, Vol. Two, New York: Gold Horse Publishing Inc., 1983
4. McClinton, Katherine Morrison, Complete Book of Dolls, Hanover, PA: Everybody's Press, 1975
5. Staff, Spinning Wheel, Complete Book of Dolls, Vol. Two, New York: Gold Horse Publishing Inc., 1983

A Reminder To All Quester Treasurers

JoAnn Holland, International Treasurer

Financial Institutions/Bank Accounts

Due to compliance issues, many chapters and states are being asked by financial institutions to provide proof of The Questers and chapters' 501(c) (3) status. The International Treasurer can provide a copy of the IRS letter declaring The Questers, and subordinate organizations/chapters, as having 501(c) (3) status. Also provided is a "To Whom" letter indicating your active status and that your chapter operates under the umbrella of The Questers, Inc. All you have to do is contact the International Treasurer and ask for assistance.

In some instances the bank's customer service personnel may be able to assist. However, more and more institutions are asking for more information from The Questers. Some are even requesting our Articles of Incorporation. Should you experience this request, please contact your International Treasurer.

Dues International Bylaws Article IX, Section 2.

Treasurers collect chapter dues, including \$28 for International dues of which \$7 per capita stays with the Chartered States/Provincial organizations.

By May 1, one check from the Chapter Treasurer, four copies of the completed "Annual Chapter Dues and Membership" form and IRS Form 990 are sent to your State/Provincial Treasurer.

By June 1, Chapters in Unchartered States/Provinces send dues in one check with completed forms directly to The Quester Headquarters.

Treasurers should not include dues for members until they have been paid nor should Chapter's dues be held up waiting for dues paid late.

International dues are not pro-rated, nor refundable.

Dues received at The Questers Headquarters after February 1 are considered dues for the following fiscal year, June 1-May 31, unless otherwise requested.

State/Provincial Treasurers

Forward the "Annual Chapter Dues and Membership" forms, IRS Form 990s and collected International dues, less the \$7 per capita, to Headquarters by June 1.

Report information received from Chapter Treasurers (i.e. new and cancelled memberships, deaths, address changes etc.) to the Executive Director at Headquarters.

Prepare an Annual Financial Statement at the close of the fiscal year (May 31) and send a copy with your proposed **2015-2016 Budget** to the International Treasurer by **June 14**. Ref. International Bylaws, Article XVII, Section 10. Please include your **2015-2016 Board Roster** with contact information. Mail to: JoAnn Holland at 7527 South Rosemary Circle, Centennial, CO 80112-2630.

Treasurers

Accurate reports and membership records provided on time are very important. Errors result in members missing their Quester Quarterly and officers not receiving 990s or Annual Financial statements could jeopardize The Questers tax exempt status. Your attention to these details is greatly appreciated. Questions? Contact JoAnn Holland at fjholland1@q.com or 303-773-1976

Fellowship and Scholarship Donations Needed

Lee Hamill, International 3rd Vice President

Questers Fellowship and Scholarship programs depend entirely on donations from members and friends. It is our hope to continue to fund these programs with donations rather than use money from reserved funds. Our organization has a commitment to promote education in the fields of historical preservation and restoration.

Questers fund a \$40,000 Fellowship, divided over three years. Winterthur and the University of Delaware jointly sponsor this master's level program in Art Conservation. Did you know The University of Delaware/Winterthur accepts only ten students in this program? Graduates work with major museums and cultural institutions throughout the United States and Europe. Alexa Beller, Fellow #7, is in her first year of study. Alexa will be introduced and speak briefly during the Annual Banquet held at International Convention in New Jersey.

Questers Scholarship program started in 1973. Columbia University Graduate School of Architecture, Planning and Preservation has an exceptional program. Questers currently fund a \$34,000 Scholarship, divided between the two years. Our recipients are chosen from students already accepted into the master's degree program. Kathryn Gardner, Scholar #38, is in her second and final year of study. Kathryn is committed to saving the past for future generations.

Remember Fellowship and Scholarship donations for memorials, to honor a long-time member, recognize a Quester for a special program or as part of your annual giving. Personal donations are welcome. Gifts large and small add up and are deeply appreciated.

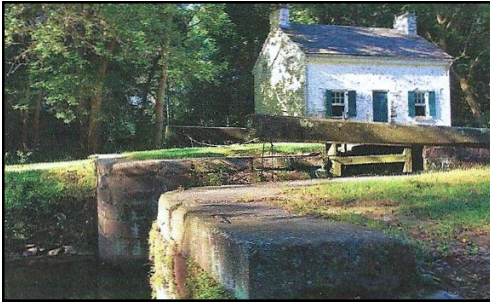
**75 Chapters and 2 States
Celebrate Milestone Anniversaries in 2015**

Congratulations!

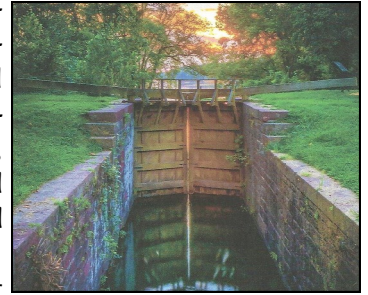
65 years:	NJ	John Estaugh #38	45 years:	MD	Chesapeakeers #430
	PA	Tredyffrin #3		MI	Shiawassie Mills #420
60 years:	IA	Siouan #36			Isaac A. Fancher #425
55 years:	IA	Old Capitol #136			Marie Moore #432
	KY	Falls of the Ohio #124		NE	John G. Neihardt #427
	MI	Quakertown #115		NJ	Old One Horn Cannon #464
		Ossewa #121		OH	David Hudson #428
	PA	Lamplighter #117		OR	Lewis & Clark #423
		Round Meadow Run #126		PA	King's Path #435
	WV	Mary Dorcas Washington #128			Bayberry #457
50 years:	CA	Todos Santos #233			Ye Olde Almshouse #466
	CO	Fifty Niners #225			Whimsies #476
	FL	Fort Harrison #208		SD	Arikara #419
	IA	Hubbell Terrace Hill #209		UT	Blue Willow #433
		Circa '64 #234	40 years:	AZ	Arizona State
	IL	Deerfield #199		CO	Longs Peak #735
		Jesse Fell #226			Steamboat Springs #759
	IN	Princess Mishawaka #196		GA	Dunwody Wells #775
	MI	Stoney Creek #203		IA	Annie Wittenmyer #737
		Fox Creek #216			Kalawequois #748
		Grand Marais #215			Olive Jane Lamb #750
	PA	Jacksonburgh #194			Buena Vista #753
		Pennsylvania State			Spirit of '76 #763
		Weldon House #212			Soldiers' Creek #764
		Dark Valley #222		IL	Polly Crandall #772
	WI	Carrie Jacobs Bond #221		IN	Fall Creek #758
		Blackhawk #223			Christiana #765
45 years:	CA	Estudillo #444		MI	Spring's Red Bird #744
	CO	Victorians #477			Courthouse Square #745
	IA	Huldah Saunders #414			Pettibone Creek #777
		Dragoon #426		MS	Sowashee Station #740
		Military Trail #438		NE	Inheritors #771
		Log Cabin #455		NH	Amherst Village #746
	IL	Prairie Belles #453		NJ	Blockhouse #751
		Treasure Seekers #475		OH	Towpath #770
		Charlemagne-on-the-Fox #478		PA	Damian House #754
	IN	Elizabeth Miriam Clyburn #437		TN	Long Island Sunbonnets #760
		H.S.K. & Amy Bartholomew #440		WI	Praireville Pioneers #761
		LaSalle-Rosseau #441			

Compiled by Judy Otis, IEB Corresponding Secretary

AntiqueWeek Recognizes The Questers



In the October 27, 2014, issue of *AntiqueWeek* newspaper, The Questers was featured in a front page article. Written by Eric C. Rodenberg, the article relates the origin of The Questers in 1944 when Elizabeth Bess Barden purchased a blue syrup pitcher to current projects of various chapters and the awarding of Preservation and Restoration Grants at the 2014 International Convention. Much of the article focuses on preservation of the remaining 26 of the original 57 lockhouses that operated on the Chesapeake and Ohio Canal from 1831 until 1924. Maryland Questers Chapters, Potomac #10 and Captain John #517, through fund raising efforts have purchased and donated two radios, a 1953 Emerson Bakelite and a 1938 Silvertone, to be used in two of the lockhouses.



Becky Curtis, Director of Programs and Partnerships with the C&O Canal Trust stated, "Finding groups who are interested in preserving and educating the public is really a godsend. It takes a group effort like this. Questers will be helping educate the public and get them interested by enhancing the visit, and ultimately getting more visitors." (For the complete article contact www.AntiqueWeek.com) Photos courtesy of *AntiqueWeek* publication., October 27, 2014.

Becky Curtis, Director of Programs and Partnerships with the C&O Canal Trust stated, "Finding groups who are interested in preserving and educating the public is really a godsend. It takes a group effort like this. Questers will be helping educate the public and get them interested by enhancing the visit, and ultimately getting more visitors." (For the complete article contact www.AntiqueWeek.com) Photos courtesy of *AntiqueWeek* publication., October 27, 2014.

Home of Bess Bardens for Sale

The home of Bess Bardens at **512 Hartranft Ave. in Fort Washington, PA**, is on the market for sale. Built in 1921, the classic center hall Colonial home of 2,201 square feet has 4 bedrooms and 2 baths. (From Gail Cathey of Pilgrim #237) http://mediastg.net/dyna_images/mls/2215/64379



Q Nuts & Bolts



Why does International need a copy of our Chapter, State and Provincial bylaws? It is not because International needs to know Chapter, State and Provincial day-to-day business – meeting days, etc. Signed bylaws on file at Headquarters protect our Organization and members. Anyone who challenges our non-profit status can know from the members, to Chapters, States and Provinces, that all understand the purposes and working parameters of The Questers because they have read, agreed to, and signed their bylaws. It is one of the checks and balances in place as a 501(c)(3) organization. Article XV, Amendments and Revisions, in State, Provincial and Chapter bylaws, protects members, and their Chapter, and State or Province as they know it. No one may change the bylaws without advance notice of a vote, and a required two-thirds approval to change. International deems the information required on the standard forms important enough to the members to be protected in the Bylaws and filed at Headquarters.

What's in a Name

Welcome New Jersey - Ellarslie #1507- Chartered February 16, 2015

In approximately 1738, Dr. Thomas Cadwalader, a physician from Philadelphia, moved to Trenton and in 1740 became the city's first mayor. His son Lambert Cadwalader was a Lieutenant Colonel under Gen. George Washington and lived in an estate in Trenton after the war. His son, Thomas Cadwalader, inherited the estate and after he passed away left the land to his sons, John and Richard Cadwalader. Noticing Trenton's westward growth and forthcoming residential development, the Cadwalader brothers hired Edmund C. Hill to market their property. Hill championed the creation of Cadwalader Park where Ellarslie Mansion is located in the center and crest of the park.

In 1848, Jon Notman designed a summer home, Ellarslie, for Henry McCall Sr. who later sold it to George Farlee. The city of Trenton purchased the mansion and surrounding 80 acres from Farlee in 1889 and contracted F.L.Olmsted to design Cadwalader Park. In 1902, Cadwalader Park officially opened and the mansion became an ice cream parlor. In an effort to keep the mansion preserved, the city of Trenton used Ellarslie as a refectory, a natural history museum and a zoo. It is named after the town of the same name in Scotland and a title of a favorite poem of the Henry McCall family. Ellarslie was included in the National Register of Historic Places in 1974.

In Memoriam

<p style="text-align: center;"><u>Arizona</u> MAXINE BURLEY Phoenix Firebird #629</p> <p style="text-align: center;">JEAN CLARK Ho-Ho-Kams #622</p> <p style="text-align: center;">CARYL SHAFER Ocotillo #582</p> <p style="text-align: center;"><u>California</u> BARBARA JOHNSON Oak of the Golden Dream #381</p> <p style="text-align: center;">LYNNE LANG Don Benito #1091</p> <p style="text-align: center;">JUDY OSBORNE Amador #1059</p> <p style="text-align: center;">ANGELINA PREZEL Wine and Roses #1263</p> <p style="text-align: center;"><u>Colorado</u> JANE ANDERSON Saun Seearay #302 Chapter Secretary</p> <p style="text-align: center;">JEANETTE GEORGE Old Mill #728</p> <p style="text-align: center;">MARYEL LEWIS Casa Quasita #518</p> <p style="text-align: center;">ALBERTA MARLATT Longs Peak #735</p>	<p style="text-align: center;"><u>Florida</u> MARIANNE OCKER Treasured Memories #1096</p> <p style="text-align: center;">MABEL WILCOX Ponce de Leon #183</p> <p style="text-align: center;"><u>Iowa</u> LIZ PARK White Pole Road #511</p> <p style="text-align: center;"><u>Illinois</u> JOANNE SMITH Barrington #544</p> <p style="text-align: center;">KAY L. STEPHENS Almeda Naper #793</p> <p style="text-align: center;"><u>Maryland</u> MRS. DONALD RYPKA Cadwalader of Kent #940</p> <p style="text-align: center;">DORIS WINTER New Yarmouth #1048</p> <p style="text-align: center;"><u>Michigan</u> SHIRLEY FORD Shagbark #999 Chapter Treasurer</p> <p style="text-align: center;">DOROTHY KRAKLAU Burnett's Traders #567 Charter Member</p> <p style="text-align: center;">MARY MCGRAW Hartland Stage Coach Inn #356</p>	<p style="text-align: center;"><u>Michigan</u> JANET MOEHN Mah-Nah-Be-Zee #198 Chapter President</p> <p style="text-align: center;">MADELEINE SCRANTON Pettipointe #243</p> <p style="text-align: center;">BARBARA SIMONS Shagbark #999</p> <p style="text-align: center;"><u>Missouri</u> NORMA GALLAGHER Westward Gateway #1066</p> <p style="text-align: center;"><u>New Jersey</u> MARION TRIGG Cranberry Boggers #586</p> <p style="text-align: center;"><u>Ohio</u> SHERRY BONHOMME James Ellsworth #634</p> <p style="text-align: center;">MARIAN FEISLEY National Trail #348</p> <p style="text-align: center;">MARY KAY STONE Johnny Applesseed #483</p> <p style="text-align: center;"><u>Oklahoma</u> BARBARA HARRAWOOD Oil Capital #1262</p> <p style="text-align: center;">JANE SMITH T-Town #996 Past State President</p>	<p style="text-align: center;"><u>Pennsylvania</u> VERA EBY ALBERT Lancaster County #1395</p> <p style="text-align: center;">AUDREY BUCHHOLZ Blue Bell #82</p> <p style="text-align: center;">LAVERNE CROOK Ann's Choice #1479</p> <p style="text-align: center;">JOAN LOUGHERY Neshamini Creekers #1460</p> <p style="text-align: center;">MARY LOU MANN Fanback #392</p> <p style="text-align: center;">JOAN SCHULER Fanback #392</p> <p style="text-align: center;"><u>South Dakota</u> NANCY AMAN Land of Oz #1001 Charter Member Past State President</p> <p style="text-align: center;"><u>Washington</u> BOB ROBINSON Millersburg Seekers #1490 Charter Member</p> <p style="text-align: center;"><u>Wisconsin</u> PAT BURRINGTON Prairieville Pioneers #761</p> <p style="text-align: center;">JUNE GEIGER Swiss Attic Fanciers #939</p> <p style="text-align: center;">LORI UNANGST Brookfield Junction #596</p>
---	--	---	--

Arizona
Yavapai #1506

Alynn Stefanko

What's in a Name? Yavapai #1506 organized and chose the name "Yavapai" in July, 2014, and received their charter in August, 2014. Linda Ogo, Culture Research Department Director for the Yavapai-Prescott Indian Tribe, presented a program, "The History of the Yavapai Tribe", at the October meeting. Along with helper Aubry, Linda shared many items that the members could touch and examine. Yavapai means "people of the sun". The Yavapai are indigenous to Arizona.



Florida
Bertha Honore` Palmer #1355

Janet Gibb

Bertha Honore` Palmer #1355 had an outing to Snook Haven in Venice, FL. Lunch was enjoyed on the screened-in porch while they listened to a group of banjo players from the West Coast Banjo Society who entertains there weekly. Snook Haven is located on a remote peninsula along the shores of the Myakka River, upstream from the Gulf of Mexico. The history of Snook Haven includes smugglers during prohibition in the 1920's and 1930's. Later it became the site for filming Hollywood's exotic jungle movies, after which it became a private fishing camp. The area has become a Florida landmark and is considered one of the finest examples of "Old Florida" on the west coast of the state.



Members at Snook Haven

Colorado
Old Mill #728

Julianne Cassady

Members of Old Mill #728 toured the Wise Homestead Museum in September, 2014. The Wise Homestead, located in Erie, Colorado, dates back to 1869. It is now one of the oldest frame houses in Boulder County. With a grant from the Colorado Historical Society, the original farmhouse's exterior and interior were restored. It opened to the public in 2007. In November, the chapter made a donation to Wise Homestead Museum to further their preservation efforts.



Indiana
Fall Creek #758

Ruth Tout

Always on the lookout for that special valentine, our January guest speaker zeroed in on one while shopping with her husband. When he asked if she really wanted it---her snappy retort was, "Does the sun come up in the east?" A lifetime collector, Ethel Booth has amassed an extensive collection which she happily displayed for Fall Creek members. An expert on valentines and their history, Ethel's enthusiastic presentation and witty repartee (she is an accomplished and well-known actress in Indianapolis) kept attentive members entertained while they were learning. One moment members "oohed" and "aahed" over the delicate beauty of one valentine; the next moment, they giggled over the silly verse of another. Ethel's obvious pleasure in her collection truly epitomizes Questers' creed: *It's fun to search and a joy to find.*



Iowa

Prairie School #1095

Edwina Kopal

Prairie School #1095 traveled to Dougherty to tour Tyden Farm #6, which is listed on the National Historic Registry. The 40 ft. x 140 ft. barn in the photo was built in 1936. The present owners still have a working farm, but have turned the barn into a museum with antique farm machinery dating back to 1923.



Before the turn of the century Emil Tyden came to the U.S. from Sweden with only \$20.00. He became an inventor and developed the “Cargo Seals” for trains to prevent theft which are still used today for safety. Tyden believed in improving feed for cattle and developed a high-protein product. He lived in Michigan, was interested in raising food and felt Iowa was a great place to do that. He started buying Iowa farmland in 1915 and accumulated eight farms. Because there was no air conditioning years ago, this farm like others had a summer kitchen equipped with a coal stove and items needed to prepare a meal. Flower gardens, each with a farm theme, surround the house. Prairie School #1095 will celebrate its 30th anniversary in the fall of 2015.

White Pole Road #511

Kay Peterson

White Pole Road #511 profited from the memories of one of our charter members, who told of pre-paved highway travel in Iowa in the early 20th century. Getting Iowa “out of the mud” was a goal of the public. This lady described the miserable conditions of travel due to execrable



L to R – Kay Peterson, Anita Calkins, Cheryl Hamilton, Coral Peterson, Arlene Wilson, Carol Popken, Linda Robel, Marilyn Lorenz, Rosemary Olds

White Pole Road #511 Continued

“roads” before a highway system linked Iowa communities and assured travelers of travel safety and efficiency. A designated state-wide road from river to river, every mile marked by white poles high enough to be seen above the snow was “The White Pole Road”. This road would assure travelers of a trip over a mapped territory where wandering cows and chickens wouldn’t get in the way. A stretch of this 100+ year old historical road still exists between Adair and Dexter. At another outing, we traveled this road, learning more about it from speakers, toured the All Saints Center for Culture & Art in Stuart, toured the Dexter Museum and heard stories of Bonnie & Clyde Barrow. After lunch we visited Drew’s Chocolates.

Maryland

Captain John #517

Roz Hopkins

In 2010, Captain John #517 members invited the Director of the Maryland State Archives to present a program on the acquisition of George Washington’s farewell address in the Maryland State House. The document had been in private hands for years and now belongs to the State. Plans were to display this historical document in the same place as it was delivered. The members were told that construction of such a case for this precious document was going to be very costly. Nevertheless, the members were so excited about the project that they voted to contribute \$2500 to it’s completion.

Recently the chapter received an invitation from THE FRIENDS OF MARYLAND STATE ARCHIVES to the unveiling on February 16, 2015. The letter expressed their appreciation of the chapter’s significant support for the project. The chapter is ecstatic to have had a part in such an important historical acquisition.

What is the difference between a scholarship and a fellowship?

A **scholarship** is issued to the Quester scholar in the form of a check payable to the school. The school applies this money toward tuition of the Quester scholar. A **fellowship** is also issued in the form of a check issued to the institution, and funds are distributed to the Quester Fellow periodically for living expenses. Scholarship students may work to supplement their education. Fellowship students do hands-on-work in the conservation program of forty hours a week plus their studies and are not allowed to work outside of this schedule.

Michigan

Sauk Trail #573

Sue Poster

Sauk Trail #573 was awarded a grant at the 2014 International Quester Convention held in Grand Rapids. The grant was used to re-upholster four pieces of furniture at the historic Simmons/Hill House at Greenmead Historical Park. Three pieces are part of Mrs. Hill's bedroom: a vanity bench, a bolster bench and a chair. The fourth piece is a red parlor chair. All the pieces were done by a local Livonia business, John's Upholstery.



Back row: Suzanne Daniel, Linda Wiacek, Kathy Johnson-Bartshe, Sue Poster, Aggie Thompson, Joyce Hynes, Barbara DiPiazza, Louise Rayburn, Joanne Marshall.

Front row: Mary Cambridge and Linda Trewin.

This past October, the chapter was awarded another grant at the Michigan State Quester Convention. Funds from this grant will be used to re-upholster three additional pieces at the Simmons/Hill House.

Missouri

Westward Gateway #1066

Suzanne Lehr

On October 8, 2014, several members of Westward Gateway #1066 celebrated the completion of the restoration of the Geiger mausoleum at Mount Mora Cemetery in St. Joseph, Missouri. The project was funded by a \$6,000 Questers International Preservation and Restoration Grant and two fundraising events hosted by Westward Gateway #1066 totaling \$2,880.



The Geiger mausoleum is one of 30 mausoleums in this historic 1851 cemetery listed in The National Register of Historic Places. The cemetery is the resting place of

Westward Gateway #1066 Continued

three Missouri governors, architects, artists, writers, a former United States Ambassador and Assistant Secretary of the Treasury, an English Baronet, two pony express riders, several hundred veterans of multiple wars, and many other individuals who contributed to local, state, national, and international history.

Nebraska

Dome Rockers #1487

Scott's Girls #1420

Scott's Bluff #1346

Jan Van Newkirk

Dome Rockers #1487, Scott's Girls #1420, and Scott's Bluff #1346 met on November 18th at the Legacy of the Plains Museum in Gering. The three chapters often meet together and cooperate on projects. On this occasion, State President Millie Miller came to visit and check arrangements for the 2015 State Day with the State Day Committee from Dome Rockers #1487. President Miller spoke of her duties as State President, the rewards of leadership, opportunities for recruiting new members, and offered suggestions on how members can help make The Questers a stronger organization.



Left to right: Scott's Girls #1420 President Shar Snygg, State President Millie Miller, Dome Rockers #1487 President Sheila Miller, and Scott's Bluff #1346 President Gretchen Deter

Trivia

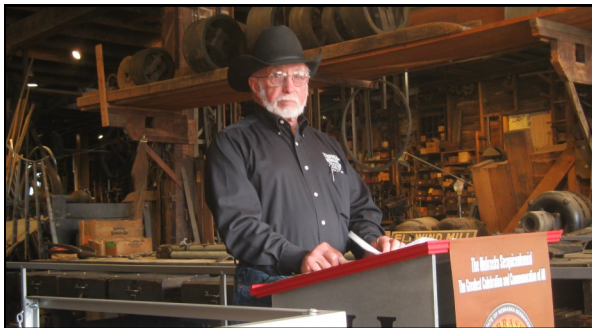
Did you know the saying "God willing and the Creek don't rise" was in reference to the Creek Indians and not a body of water? It was written by Benjamin Hawkins in the late 18th century. He was a politician and Indian diplomat. While in the south, Hawkins was requested by the President of the U.S. to return to Washington. In his response, he was said to write, "God willing and the Creek don't rise." Because he capitalized the word "Creek" it is deduced that he was referring to the Creek Indian tribe and not a body of water.

Nebraska

J. Sterling Morton #1021

Ruth McMaster

J. Sterling Morton #1021 members recently visited the Kregel Windmill Factory Museum in Nebraska City. Museum board member Duane Smith shared stories of the Kregel family which had operated the factory from 1903 to 1991. The family produced the "ELI" brand windmills until rationing of raw materials during WWII. Then the factory's focus turned to windmill-related services. The factory is so well-preserved (as it would have been in the year 1939) that it appears the workers have stepped out to lunch. A fully-restored ELI windmill, originally manufactured here, is standing across the street. The Kregel Windmill Factory Museum is the only surviving intact historic line-driven windmill factory in the United States. P&R grant awards from both Nebraska and International have helped preserve and restore this building and also an ELI windmill.



New Hampshire

Amoskeag Mills #1082

Andrea Lee

Amoskeag Mills #1082 hosted the New Hampshire Humanities Council program "A Visit With Queen Victoria" in November, 2014. Dressed in proper 19th century clothing resplendent with Royal Orders, actor Sally Mummey re-enacted Queen Victoria. Using Queen Victoria's diary and letters, the presentation revealed the personal details of a powerful, yet humane woman, who reigned for 63 years beginning in 1837.

A Chapter's Name - Did you know?

My Chapter's name is Towpath #770, not Towpath Chapter #770. When a check is written it should be written to: Towpath #770, not Quester Chapter Towpath #770. Even if a group named their chapter Judy's Chapter #2001, it would be chartered as Judy's #2001. (Judy Finkel, International 2nd VP)

Ohio

David Hudson #348

Anna Lee #968

James Ellsworth #634

Joan Maher

David Hudson #348 hosted Anna Lee #968 and James Ellsworth #634 for a program about the American Red Cross Volunteer services during WWII. Eileen Guinta with Peggy Rothermel presented a brief history of the Red Cross including Clara Barton's work during the Civil War and the city of Hudson's connection during WWII. Eileen's husband and son, who were involved in reenactments of WWII, brought home a Red Cross volunteer nurse's aide uniform for her so she could join them. Over the years, Eileen collected memorabilia from various Red Cross Services (Production, Canteen, Motor Service, Hospital, Recreation, Nurses' Aides, Braille, Administration and Staff Assistance Corps). She explained when each service was formed, their duties, eligibility and training. With chapter members wearing vintage uniforms, she explained what service each performed. Among items displayed were an original comfort quilt, knitted items, a record sent home from a service man/woman, manuals, aide kits, and posters.



Left to right: Lynn Spann, Diane Cooper, Joan Maher, Marty Hills, Evie Martindale, Peggy Rothermel, Barb Hanna, Speaker Eileen Guinta.

David Hudson #348 member Evie Martindale related she attended the Washington, D.C. celebration of the 70th Anniversary of the surrender of Japan where WWII veterans and "Rosie the Riveters" were honored. Evie, one of the five "Rosies" in attendance, was interviewed by NBC, CBS, and Fox News about her experiences as a "Rosie the Riveter" when she worked for Goodrich trimming rough gas masks to make them suitable for pilots. Her story appeared in *The Washington Post*.

Oklahoma

Nellie Johnstone #927

Mary Alice Sigmon

Nellie Johnstone #927 celebrated its 35th year on September 25 in the home of Jane Waters with Gretta Parks serving as co-hostess. Joining the members was special guest, The Questers International President, Ginger Robbins. Barbara Williams, Nellie Johnstone Questers charter member, gave a presentation on the history of the chapter's founding and its early fund-raising projects which helped restore the Beck Indian Cemetery in Bartlesville. A slide show featuring members and their collections, Questers state meetings and field trips to historic locations accompanied the presentation.

The chapter's ongoing restoration and preservation site, adopted in 2010, is the Frank Phillips Home. The group applied for and received a state grant, aided by the Oklahoma Historical Society and Friends of the Frank Phillips Home, for the restoration of an oil painting entitled, "Cattle Drive" which was restored in 2012. During the Christmas Open House members serve as docents.



Charter members of Nellie Johnstone #927 chapter of The Questers are shown above displaying one of many scrapbooks of pictures spanning 35 years since the chapter was chartered in September, 1979. Those pictured are from left: Mary Alice Sigmon, Meg Greenwood, Claudean Greene, Jackie Stayton, Barbara Williams and special guest, Ginger Robbins, Questers International President.

Pennsylvania

Kit-Han-Ne #408

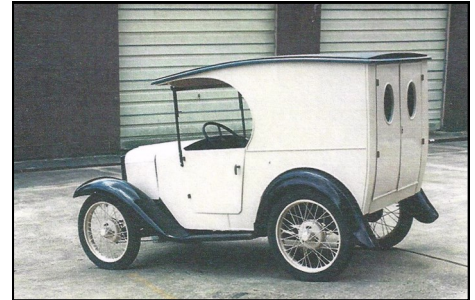
Carolyn Schrecengost

Kit-Han-Ne #408 has completed its 2014 International and PA Grants project. The 1928 Austin C-Cab Van arrived at the Butler County Historical Society's Museum recently. This original prototype was acquired from a Butler County resident. The English Austin was modified to American standards and used as a blueprint for manufacturing this small delivery truck. Funds from the chapter's annual "Antiquing Along the Allegheny Antique and Craft Fair" were allocated for this project by the chapter along with grants from PA and International Grants funds. The chapter sponsored the kick-off drive that began with a total of \$3,000 for Butler County Historical Museum. Additional cost was covered by donations from anonymous sources. The Society's Administration Director, Pat Collins,

Kit-Han-Ne #408 Continued

the exterior of the vehicle has been restored. Additional parts will be added and the interior will be completed by the Society. The truck/van will be housed in The Lowrie/Shaw Carriage House at 123 West Diamond St. in Butler. Mechanic's coats from the Austin Factory are among the memorabilia.

Sir Herbert Austin chose Butler for his factory because of its location near the east coast and a supply of willing workers. Significant in Butler's history, the Bantam Company was formed from the Austin Company and ultimately the "jeep" (of WWII fame) had its birthplace in Butler.



1928 Austin C-Cab

Canada Alberta

Bow Valley #890

Jane Topp, Provincial Organizer

Bow Valley #890 celebrated their year's end with a visit to Quester Marie Lammie and husband Barry's llama ranch. Marie, one of Alberta's top llama breeders, used her barn for her business in the past. Marie and Barry, not now as involved with llamas, have turned the empty hay loft into a "picker's loft". It now looks like a settler's cabin decorated with artifacts Marie has collected from her rural Saskatchewan roots including antique tables, desks, washing machines, Hoosiers, butter churns, cream separators, and a grand piano circa 1800's.

Members dressed in clothes of the early 1900's and brought boxed lunches from that era to be auctioned as a fund raiser. The lunches, whose maker was kept secret, were presented in tins, baskets, bags and pretty paper. Barry secretly invited television personality Sheldon Smithers (Canadian Pickers) and his wife to auction the lunches. Hands went flying up for the lunches!



ADDRESS OR NAME CHANGE
(Please Print)

NAME

CHAPTER NAME AND NUMBER

Present Address:

STREET NUMBER

CITY STATE ZIP

New Address:

STREET NUMBER

CITY STATE ZIP

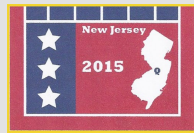
Mail to:

The Questers
210 South Quince Street
Philadelphia, PA 19107

THE QUESTERS

210 South Quince Street
Philadelphia, PA 19107

NON PROFIT ORG
U S POSTAGE
PAID
PHILADELPHIA PA
PERMIT NO 902



***A full color version of the Quester Quarterly
is posted on the Quester website at www.questers1944.org***

The Questers Jewelry

President's pins are 10K gold. All other jewelry is 10K double plated with royal blue background. There are two sapphires in those described with stones. The gavel guard is the only attachment to be placed on the Quester pin.

(PRICE INCLUDES POSTAGE AND INSURANCE.)

0083 Membership pin with sapphires	\$90.00
0414 Membership pin with tie tack	\$20.00
0243 Chapter Presidents pin with sapphires & gavel	\$105.00
0315 State Presidents pin with sapphires	\$98.00
0163 Past State Presidents pin with sapphires	\$90.00
0164 Past Provincial Presidents pin with sapphires	\$102.00
0316 Provincial Presidents pin with sapphires	\$105.00
0294 "Q" stick pin	\$62.00
0307 "Q" charm (gold)	\$53.00
0308 "Q" charm (silver)	\$48.00
0147 Gavel Guard	\$45.00
0309 Past National/International Officers Pin	\$55.00

Make all checks payable to: The Questers

Order From: The Questers

210 South Quince Street—Philadelphia PA 19107

Headquarters telephone: 215-923-5183

Irene Doll Wenzell's e-mail:

questers210@questers1944.org

In this Spring issue ...

	Page
President's Message	2
Convention Information	3-5
Call to Convention	5
Open Forum Request	5
International Board News	6-7
Anniversary List	8
Quester News	9
New Chapter Recognition	10
In Memoriam	10
Chapter News	11-15
Questers Jewelry	16

